

ABERDEEN CITY COUNCIL

COMMITTEE	Planning Development Management Committee
DATE	25 September 2014
DIRECTOR	Gordon McIntosh
TITLE OF REPORT	Confirmation of Tree Preservation Order numbers 214, 219 & 220
REPORT NUMBER:	EPI/14/256
CHECKLIST RECEIVED	Yes

1. PURPOSE OF REPORT

To have confirmed three provisional Tree Preservation Orders made by the Head of Planning and Sustainable Development under delegated powers. The Orders currently provide temporary protection for the trees, but are required to be confirmed by the Planning Development Management Committee to provide long term protection.

2. RECOMMENDATION(S)

It is recommended Members confirm the making of Tree Preservation Orders 214, 219 and 220 without modifications, and that the Head of Legal and Democratic Services attends the requisite procedures.

3. FINANCIAL IMPLICATIONS

The cost of confirming the Orders will be met through existing budgets.

4. OTHER IMPLICATIONS

A Tree Preservation Order gives statutory protection to trees that contribute to the amenity, natural heritage or attractiveness and character of a locality. As outlined in Local Development Plan Policy NE5: Trees and Woodland, the Council will take the necessary steps to ensure that trees are protected in the longer term.

The making of any Tree Preservation Order is likely to result in further demands on staff time to deal with any applications submitted for consent to carry out tree work and to provide advice and assistance to owners and others regarding protected trees. This is, however, contained within existing staffing resources.

The process of applying for work to protected trees allows for Elected Members, Community Councils and members of the public to have an opportunity to comment on work to protected trees.

The making of Tree Preservation Orders reduces the risk of losing important trees, groups of trees and woodlands, hence protecting the local amenity. Protecting trees has the further benefit of contributing to the Council's policies on improving air quality and helping combat climate change.

Promoting the improvement and maintenance of environmental quality and townscapes supports investment and economic competitiveness.

5. BACKGROUND/MAIN ISSUES

- **Tree Preservation Order Number 214, Former Mile-End School, Midstocket**

The reason for making the Tree Preservation Order is to protect the amenity of this area of Aberdeen City. The trees in this part of the City make an invaluable contribution to the attractiveness, character and amenity of the area.

The loss of trees would be detrimental to the amenity value of the site. The making of a Tree Preservation Order will afford the trees a level of protection throughout the redevelopment of the site, ensure the long term retention of trees and secure future tree cover in this area.

Making of a Tree Preservation Order here would ensure that the trees could not be removed or worked on without the express permission of the Council.

- **Tree Preservation Order Number 219, Land at Edgehill House, North Deeside Road, Milltimber**

The woodland area in question contributes to the character and amenity of the area. The loss of these trees would have an adverse effect on this character.

There is interest in developing the site and a Tree Preservation Order would ensure that trees could not be removed or worked on without the consent of the Council who would then have an opportunity to consider the environmental implications of any proposals.

- **Tree Preservation Order Number 220, May Baird Avenue**

The trees in question contribute to the local character of the area. The loss of these trees would have an adverse effect on this character. There is interest in developing the site and a Tree Preservation Order would ensure that trees could not be removed without the consent of

the council who would have an opportunity to have regard to the environmental implications of any proposals.

6. IMPACT

There are no anticipated impacts on equalities with this proposal hence an Equalities and Human Right Impact Assessment is not required. As outlined in Local Development Plan Policy NE5: Trees and Woodland, the Council will take the necessary steps to ensure that trees are protected in the longer term thus the need to confirm the aforementioned Tree Preservation Orders.

7. MANAGEMENT OF RISK

There is a risk of loss of the trees if the recommendations are not accepted which would impact on people and the environment. If recommendations are accepted the Orders will ensure the long term protection of the trees on each of the sites by ensuring the trees could not be cut down or otherwise damaged without the express permission of the Council, hence securing the public amenity and environmental value of each site.

8. BACKGROUND PAPERS

Files of Tree Preservation Orders 214, 219 and 220; maps attached

9. REPORT AUTHOR DETAILS

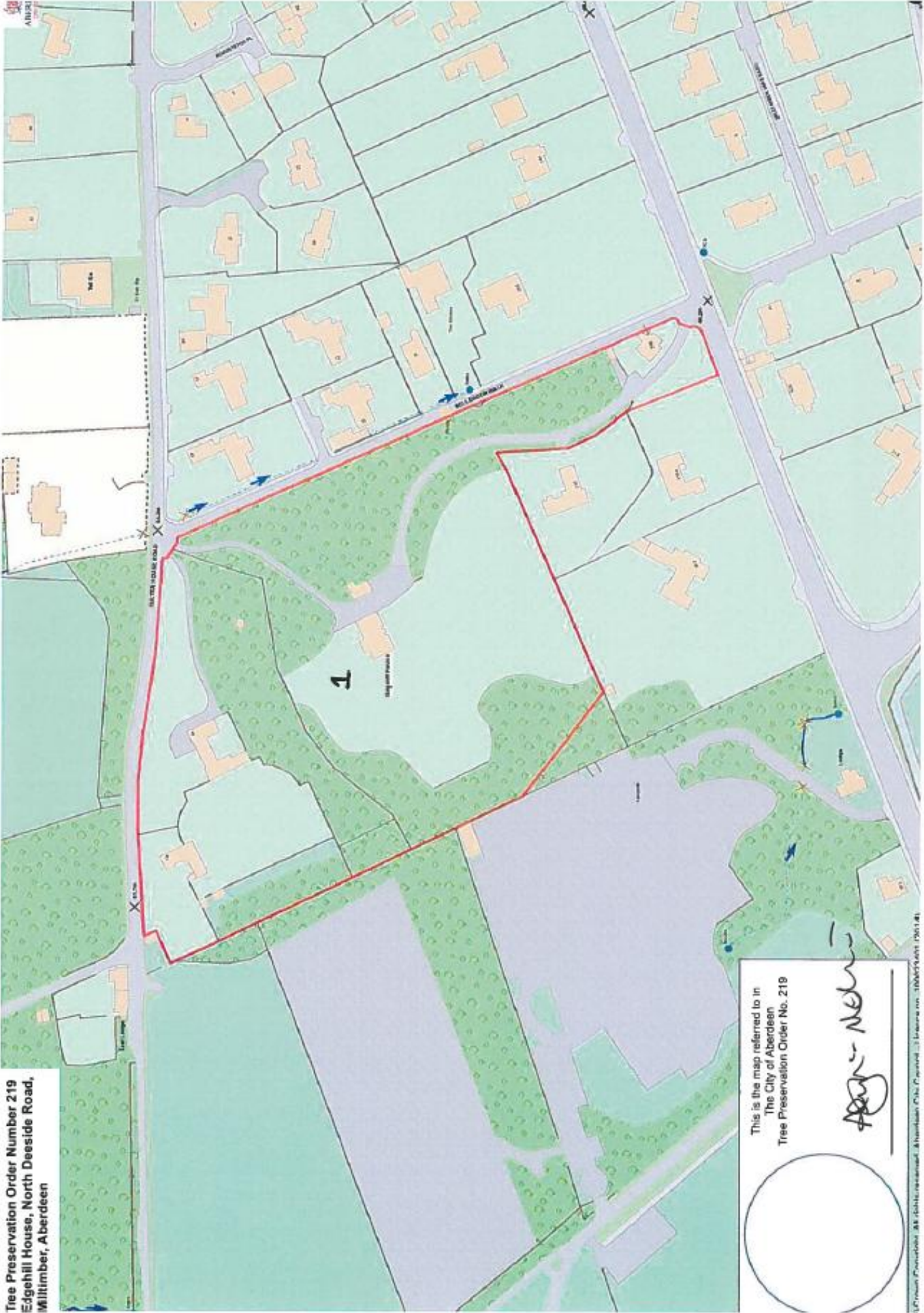
Kevin Wright
Environmental Planner
kewright@aberdeencity.gov.uk
(01224) 522440

Tree Preservation Order Number 214
Former Mile End School, Midstocket Road,
Aberdeen



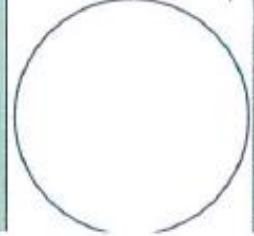
This is the map referred to in
 The City of Aberdeen
 Tree Preservation Order No. 214

Tree Preservation Order Number 219
Edgehill House, North Deeside Road,
Miltimber, Aberdeen

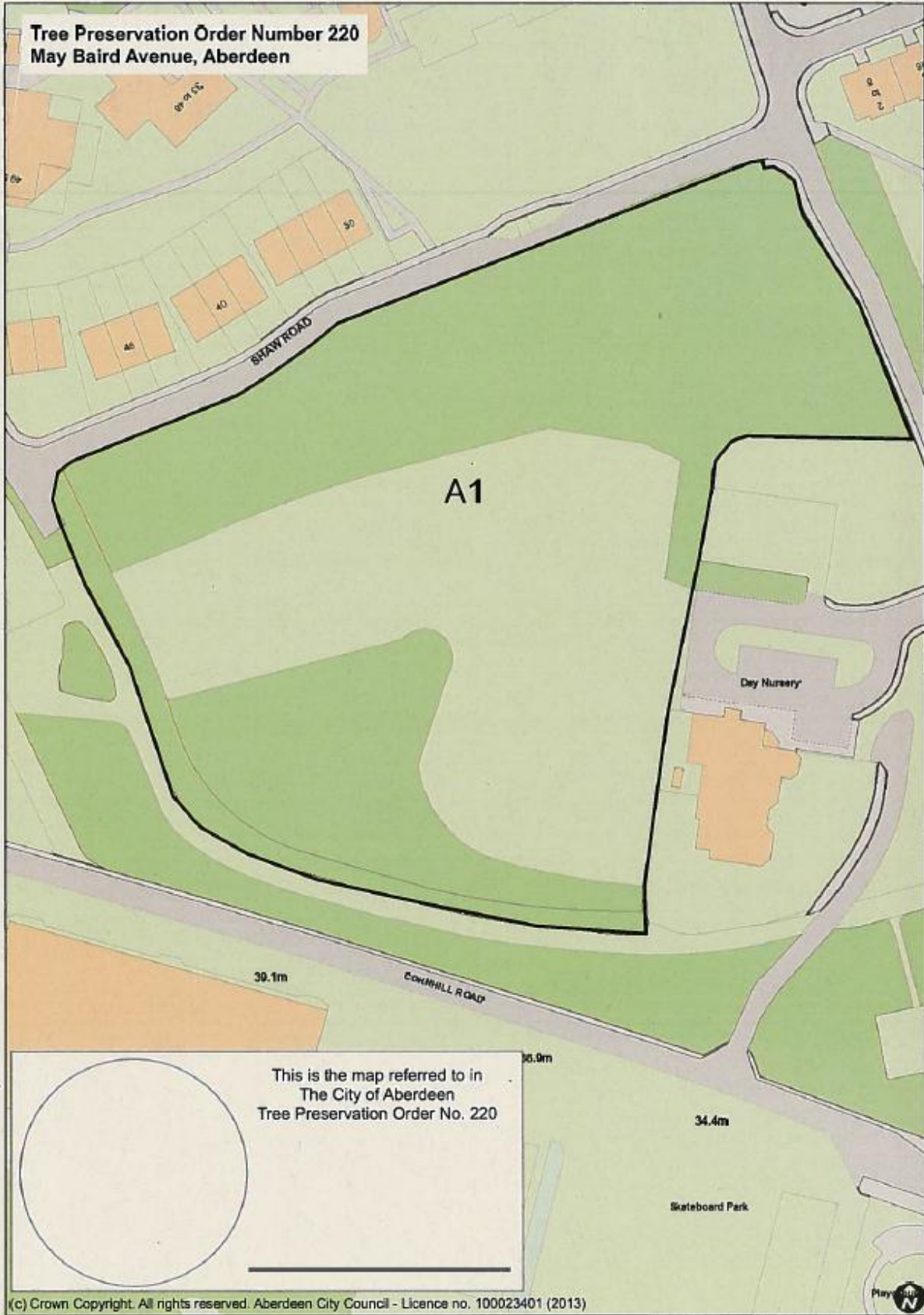


This is the map referred to in
The City of Aberdeen
Tree Preservation Order No. 219

Agnes Nelson



**Tree Preservation Order Number 220
May Baird Avenue, Aberdeen**



This is the map referred to in
The City of Aberdeen
Tree Preservation Order No. 220